

# Samba for Mooli

Todd Walton & Marcia Sloane

Copyright © 2011 Marcia Sloane

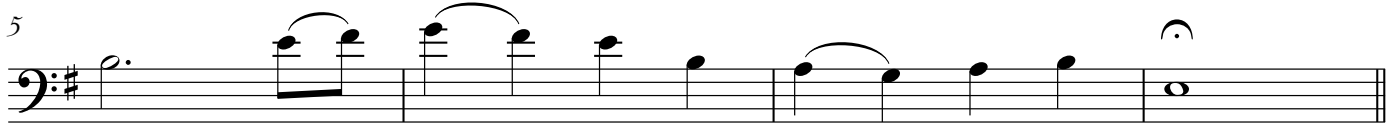
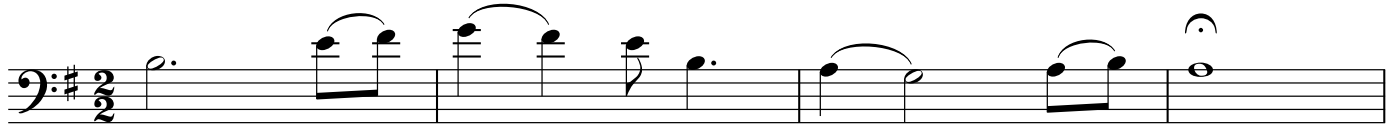
Published by Navarro River Music  
P. O. Box 366 Mendocino CA 95460  
NavarroRiverMusic.com

All Rights Reserved.

# Samba for Mooli

Intro - freely and expressively

Todd Walton & Marcia Sloane



♩ = 56

**A**

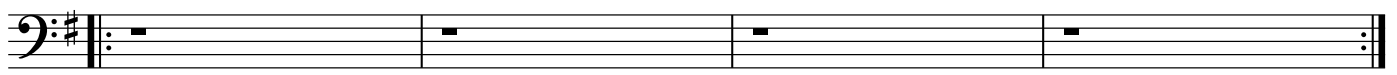
Em

E $\flat$ <sup>+</sup>

G<sup>9</sup>/D

A<sup>7</sup>/C $\sharp$

*rit.*



**B**

Em

E $\flat$ <sup>+</sup>

G<sup>9</sup>/D

A<sup>7</sup>/C $\sharp$



Em

E $\flat$ <sup>+</sup>

G<sup>9</sup>/D

A<sup>7</sup>/C $\sharp$



Am<sup>9</sup>

D<sup>7</sup>/A

Am<sup>9</sup>

D<sup>7</sup>/A



Am<sup>9</sup>

D<sup>7</sup>/A

Am<sup>9</sup>

D<sup>7</sup>/A



Em<sup>7</sup>

C $\sharp$ <sup>7</sup>/E

Em<sup>7</sup>

C $\sharp$ <sup>7</sup>/E



Em<sup>7</sup>

C $\sharp$ <sup>7</sup>/E

Em<sup>7</sup>

A<sup>9</sup>



37 Am<sup>9</sup> D<sup>7</sup>/A Am<sup>9</sup> D<sup>7</sup>/A 3

41 Am<sup>9</sup> D<sup>7</sup>/A Am<sup>9</sup> D<sup>7</sup>/A

45 Em Eb<sup>+</sup> G<sup>9</sup>/D A<sup>7</sup>/C<sup>#</sup>

49 Em Eb<sup>+</sup> G<sup>9</sup>/D A<sup>7</sup>/C<sup>#</sup>

53 Em Eb<sup>+</sup> G<sup>9</sup>/D A<sup>7</sup>/C<sup>#</sup>

57 Em Eb<sup>+</sup> G<sup>9</sup>/D A<sup>7</sup>/C<sup>#</sup>

61 Am<sup>9</sup> D<sup>7</sup>/A Am<sup>9</sup> D<sup>7</sup>/A

65 Am<sup>9</sup> D<sup>7</sup>/A Am<sup>9</sup> D<sup>7</sup>/A

69 Em<sup>7</sup> C<sup>#</sup>ø<sup>7</sup>/E Em<sup>7</sup> C<sup>#</sup>ø<sup>7</sup>/E

73 Em<sup>7</sup> C<sup>#</sup>ø<sup>7</sup>/E Em<sup>7</sup> A<sup>9</sup>

The image shows a bass line musical score in G major (one sharp). It consists of ten staves of music, each starting with a measure number and chord symbols. The chords are: Am<sup>9</sup>, D<sup>7</sup>/A, Em, Eb<sup>+</sup>, G<sup>9</sup>/D, A<sup>7</sup>/C<sup>#</sup>, and A<sup>9</sup>. The music features various rhythmic patterns, including eighth and sixteenth notes, and includes several triplet markings. The key signature is G major, indicated by a single sharp (F#).

4 77 Am<sup>9</sup> D<sup>7</sup>/A Am<sup>9</sup> D<sup>7</sup>/A

81 Am<sup>9</sup> D<sup>7</sup>/A Am<sup>9</sup> D<sup>7</sup>/A

85 Em Eb<sup>+</sup> G<sup>9</sup>/D A<sup>7</sup>/C#

89 Em Eb<sup>+</sup> G<sup>9</sup>/D A<sup>7</sup>/C#

93 Em Eb<sup>+</sup> G<sup>9</sup>/D A<sup>7</sup>/C#

97 Em Eb<sup>+</sup> G<sup>9</sup>/D A<sup>7</sup>/C#

101 Em Eb<sup>+</sup> G<sup>9</sup>/D A<sup>7</sup>/C#

105 Em Eb<sup>+</sup> G<sup>9</sup>/D A<sup>7</sup>/C#

109 Em Eb<sup>+</sup> G<sup>9</sup>/D A<sup>7</sup>/C#

115 Em Eb<sup>+</sup> G<sup>9</sup>/D A<sup>7</sup>/C#