

Sevensong

Cello 4

Marcia Sloane

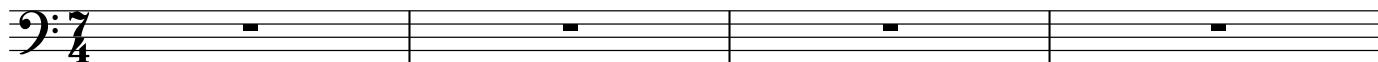
$\text{♩} = 126$

(4/4 + 6/8)

(7/8 + 7/8)

(4/4 + 6/8)

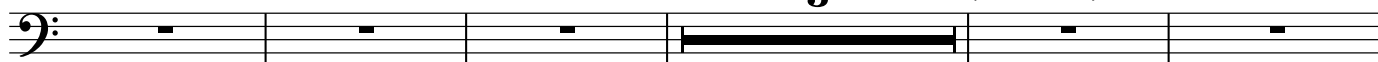
(7/8 + 7/8)



5 **A** (4/4 + 6/8) (7/8 + 7/8) (4/4 + 6/8) (7/8 + 7/8)
3 (4/4 + 6/8) (7/8 + 7/8)



13 **B** (4/4 + 6/8) (7/8 + 7/8) (4/4 + 6/8) (7/8 + 7/8)
3 (4/4 + 6/8) (7/8 + 7/8)



21 **C** (4/4 + 6/8) (7/8 + 7/8) (4/4 + 6/8) (7/8 + 7/8)
3 (4/4 + 6/8) (7/8 + 7/8)



29 **D** (4/4 + 6/8) (7/8 + 7/8) (4/4 + 6/8) (7/8 + 7/8)



33 *mf* (4/4 + 6/8) (7/8 + 7/8)



37 **E** (7/8 + 7/8)



41



45 **F** (7/8 + 7/8)



48



51



Cello 4

2 53 **G** (4/4 + 6/8) (7/8 + 7/8) (4/4 + 6/8) (7/8 + 7/8)

mf

Measures 53-56: Bass clef, 4/4 + 6/8, 7/8 + 7/8, 4/4 + 6/8, 7/8 + 7/8. Dynamics: *mf*. Includes a fermata over the first measure.

57 (4/4 + 6/8) (7/8 + 7/8)

Measures 57-60: Bass clef, 4/4 + 6/8, 7/8 + 7/8.

61 **H** (7/8 + 7/8)

f

Measures 61-64: Bass clef, 7/8 + 7/8. Dynamics: *f*. Includes a fermata over the first measure.

65

Measures 65-68: Bass clef.

69 **I** (4/4 + 6/8) (7/8 + 7/8) (4/4 + 6/8) (7/8 + 7/8)

f

Measures 69-72: Bass clef, 4/4 + 6/8, 7/8 + 7/8, 4/4 + 6/8, 7/8 + 7/8. Dynamics: *f*. Includes a fermata over the first measure.

73 (4/4 + 6/8) (7/8 + 7/8)

Measures 73-76: Bass clef, 4/4 + 6/8, 7/8 + 7/8.

77 **J** (7/8 + 7/8)

mf *mp*

Measures 77-80: Bass clef, 7/8 + 7/8. Dynamics: *mf*, *mp*. Includes a fermata over the first measure.

81

Measures 81-84: Bass clef.

85 **K** (7/8 + 7/8)

p *ppp*

Measures 85-88: Bass clef, 7/8 + 7/8. Dynamics: *p*, *ppp*. Includes a fermata over the first measure.

89

Measures 89-91: Bass clef.

92

Repeat last 2 measures as many times as needed for sound to fade into silence as players mime their parts into stillness

niente

Measure 92: Bass clef. Includes a repeat sign and a fermata.