

Sevensong

Cello 3

Marcia Sloane

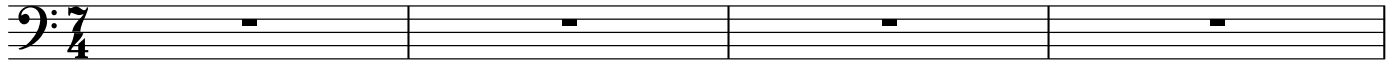
$\text{♩} = 126$

(4/4 + 6/8)

(7/8 + 7/8)

(4/4 + 6/8)

(7/8 + 7/8)



5 **A** (4/4 + 6/8) (7/8 + 7/8) (4/4 + 6/8) (7/8 + 7/8) **3** (4/4 + 6/8) (7/8 + 7/8)



13 **B** (4/4 + 6/8) (7/8 + 7/8) (4/4 + 6/8) (7/8 + 7/8) **3** (4/4 + 6/8) (7/8 + 7/8)



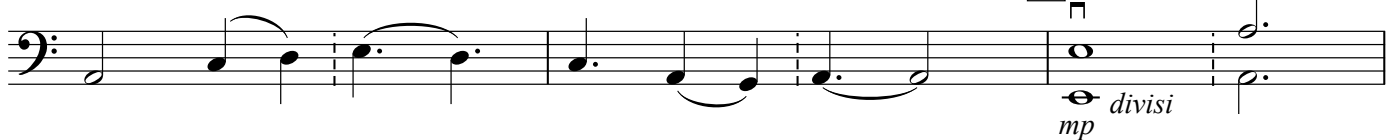
21 **C** (4/4 + 6/8) (7/8 + 7/8) (4/4 + 6/8)



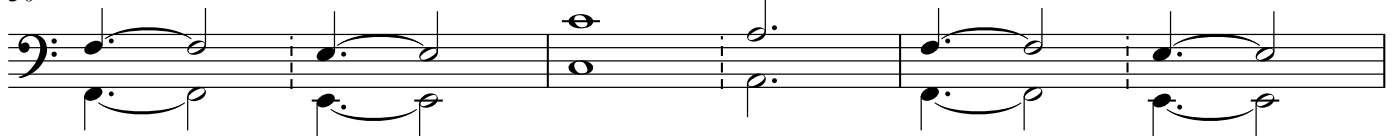
24 (7/8 + 7/8)



27 (4/4 + 6/8) (7/8 + 7/8) **D** (4/4 + 6/8)



30 (7/8 + 7/8) (4/4 + 6/8) (7/8 + 7/8)



33



35 (4/4 + 6/8) (7/8 + 7/8) **E** (7/8 + 7/8)



38



Cello 3

2 41

45 **F** (7/8 + 7/8)

mf
48

51

53 **G** (4/4 + 6/8) (7/8 + 7/8)

mp
55 (4/4 + 6/8) (7/8 + 7/8)

57

59 (4/4 + 6/8) (7/8 + 7/8)

61 **H** (7/8 + 7/8)

mf
63

65

Musical staff for measures 67-68, featuring a series of chords in the bass clef.

69 **I** (4/4 + 6/8) (7/8 + 7/8) (4/4 + 6/8) (7/8 + 7/8)

f *divisi*

f

Musical staff for measures 69-72, marked with dynamic *f* and *divisi*. It features a complex rhythmic pattern with notes beamed in pairs.

73 (4/4 + 6/8) (7/8 + 7/8)

Musical staff for measures 73-76, continuing the rhythmic pattern from the previous system.

77 **J** (7/8 + 7/8)

mf *mp*

Musical staff for measures 77-80, marked with dynamics *mf* and *mp*.

80

Musical staff for measures 80-82, continuing the rhythmic pattern.

83 **K** (7/8 + 7/8)

Musical staff for measures 83-85, marked with dynamic *p*.

86 *p*

ppp

Musical staff for measures 86-88, marked with dynamics *p* and *ppp*.

89

Musical staff for measures 89-91, continuing the rhythmic pattern.

92

Repeat last 2 measures as many times as needed for sound to fade into silence as players mime their parts into stillness

Musical staff for measures 92-93, ending with a repeat sign and a final double bar line.

niente