

Samba for Mooli

Todd Walton & Marcia Sloane

Copyright © 2011 Marcia Sloane

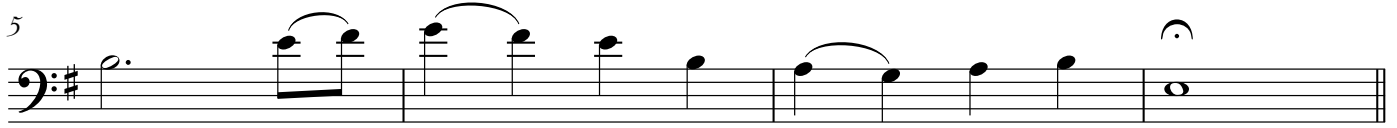
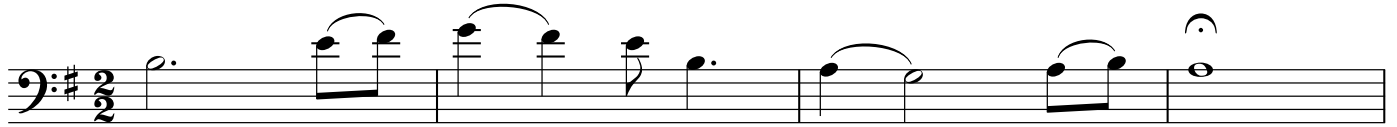
Published by Navarro River Music
P. O. Box 366 Mendocino CA 95460
NavarroRiverMusic.com

All Rights Reserved. Please do not make multiple photocopies
or otherwise reproduce or transmit this music by any means
without permission from Navarro River Music.

Samba for Mooli

Intro - freely and expressively

Todd Walton & Marcia Sloane



♩ = 56

A

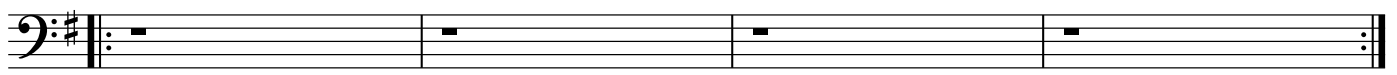
Em

E \flat ⁺

G⁹/D

A⁷/C \sharp

rit.



B

Em

E \flat ⁺

G⁹/D

A⁷/C \sharp



Em

E \flat ⁺

G⁹/D

A⁷/C \sharp



Am⁹

D⁷/A

Am⁹

D⁷/A



Am⁹

D⁷/A

Am⁹

D⁷/A



Em⁷

C \sharp ⁷/E

Em⁷

C \sharp ⁷/E



Em⁷

C \sharp ⁷/E

Em⁷

A⁹



37 Am⁹ D⁷/A Am⁹ D⁷/A 3

41 Am⁹ D⁷/A Am⁹ D⁷/A

45 Em Eb⁺ G⁹/D A⁷/C#

49 Em Eb⁺ G⁹/D A⁷/C#

53 Em Eb⁺ G⁹/D A⁷/C#

57 Em Eb⁺ G⁹/D A⁷/C#

61 Am⁹ D⁷/A Am⁹ D⁷/A

65 Am⁹ D⁷/A Am⁹ D⁷/A

69 Em⁷ C#^ø7/E Em⁷ C#^ø7/E

73 Em⁷ C#^ø7/E Em⁷ A⁹

The image shows a bass line musical score in G major (one sharp). It consists of ten staves of music, each starting with a measure number and chord symbols. The chords are: Am⁹, D⁷/A, Em, Eb⁺, G⁹/D, A⁷/C#, and A⁹. The music features various rhythmic patterns, including eighth and sixteenth notes, and includes several triplet markings. The key signature has one sharp (F#).

4 77 Am⁹ D⁷/A Am⁹ D⁷/A

81 Am⁹ D⁷/A Am⁹ D⁷/A

85 Em Eb+ G⁹/D A⁷/C#

89 Em Eb+ G⁹/D A⁷/C#

93 Em Eb+ G⁹/D A⁷/C#

97 Em Eb+ G⁹/D A⁷/C#

101 Em Eb+ G⁹/D A⁷/C#

105 Em Eb+ G⁹/D A⁷/C#

109 Em Eb+ G⁹/D A⁷/C#

115 Em Eb+ G⁹/D A⁷/C#